

Wireless Probes

DW-X1	DW-C1	DW-C2
DW-L1	DW-L2	DW-P1

大 器 匠 心 为 爱 而 来

DAWEI

Match different screen sizes of devices:

Cell phones - tablets (Android system, Apple IOS system)



Android

ISO



WiFi Connection

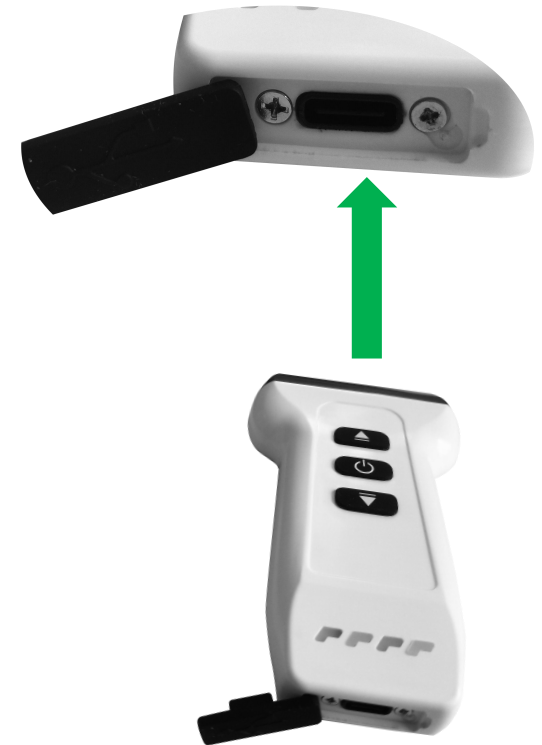
15 meters distance, no signal attenuation;



Wireless charging - Fast & Effective



Wireless Charging



Seal plug for TYPE charging port.
Effectively protect the interface



Machine usage time \approx 2H

Charging wirelessly at any time to prolong the use of time:
Battery capacity of 1350mAh



Waterproof grade IPX-5

For cleaning after use, the front of the probe can be directly rinsed or wiped with wet wipes, to effectively prevent pathogens from spreading



One key to turn on/off the machine, multiple statuses easily visible

With real-time battery indicator,
effectively control the usage time

Examination modes

B、 B/M、 CFM、 PDI、 PW

Product functional parameter

Gain GN: G30 ~ G105

Depth D: 20mm-305mm

Image enhancement (SRI): 0-4 levels, 5 levels

Wall Filter: Total 16 adjustable levels

Measuring Aid: Measuring Magnifier

Puncture

In-Plane(In-plane guide lines)、
Out-Plane(out-of-plane guide lines)

DW-X1 (Double probes), array elements: 64

3.2MHz, 7.5MHz



DW-C1 (Convex probe), array elements: 80

3.3MHz



Products display



DW-L1 (Linear probe)
array elements: 128
7.5MHz

DW-L2 (Linear probe)
array elements: 128

10.0MHz



DW-C2 (Microconvex probe)
array elements: 128

6.0MHz



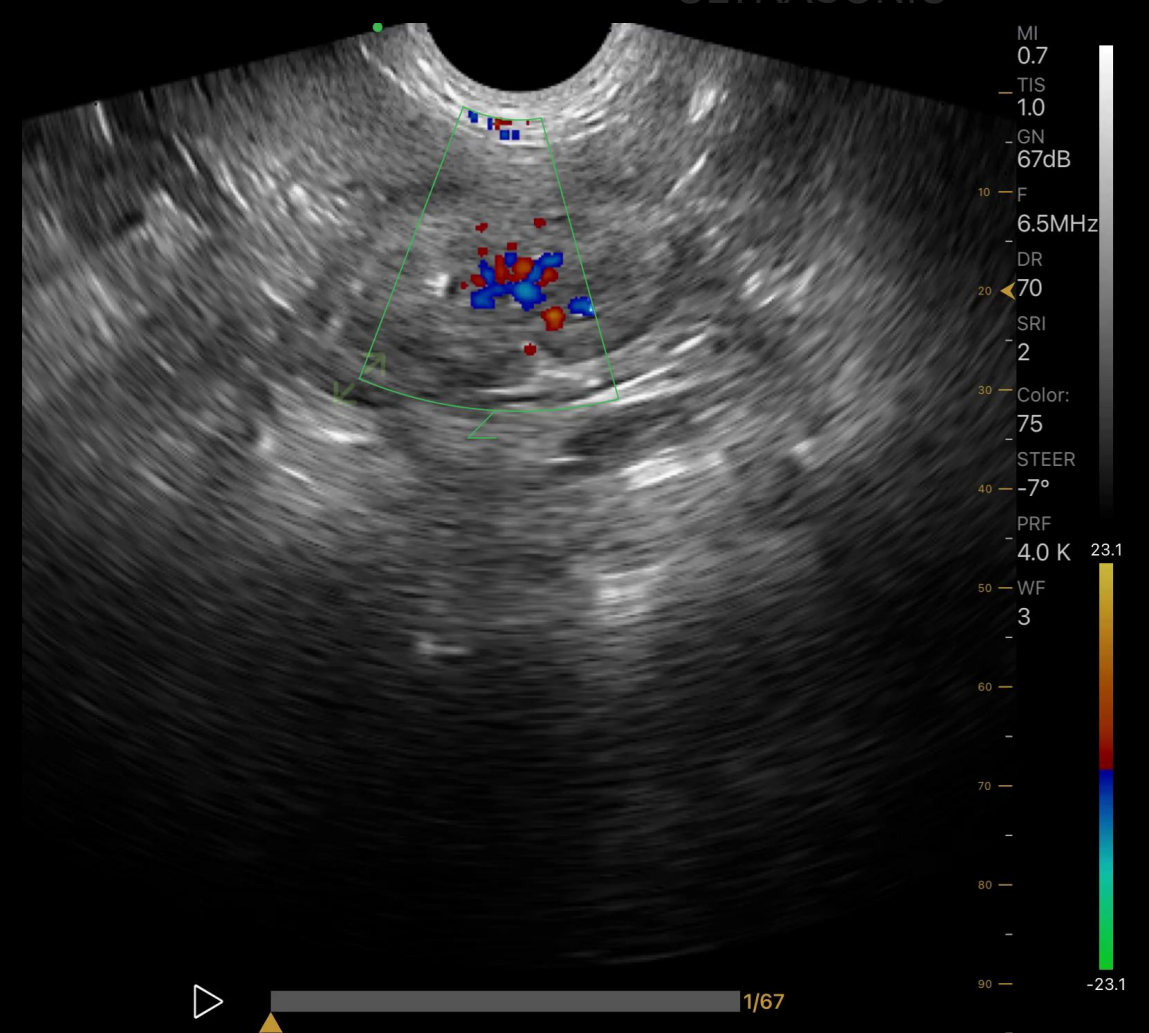
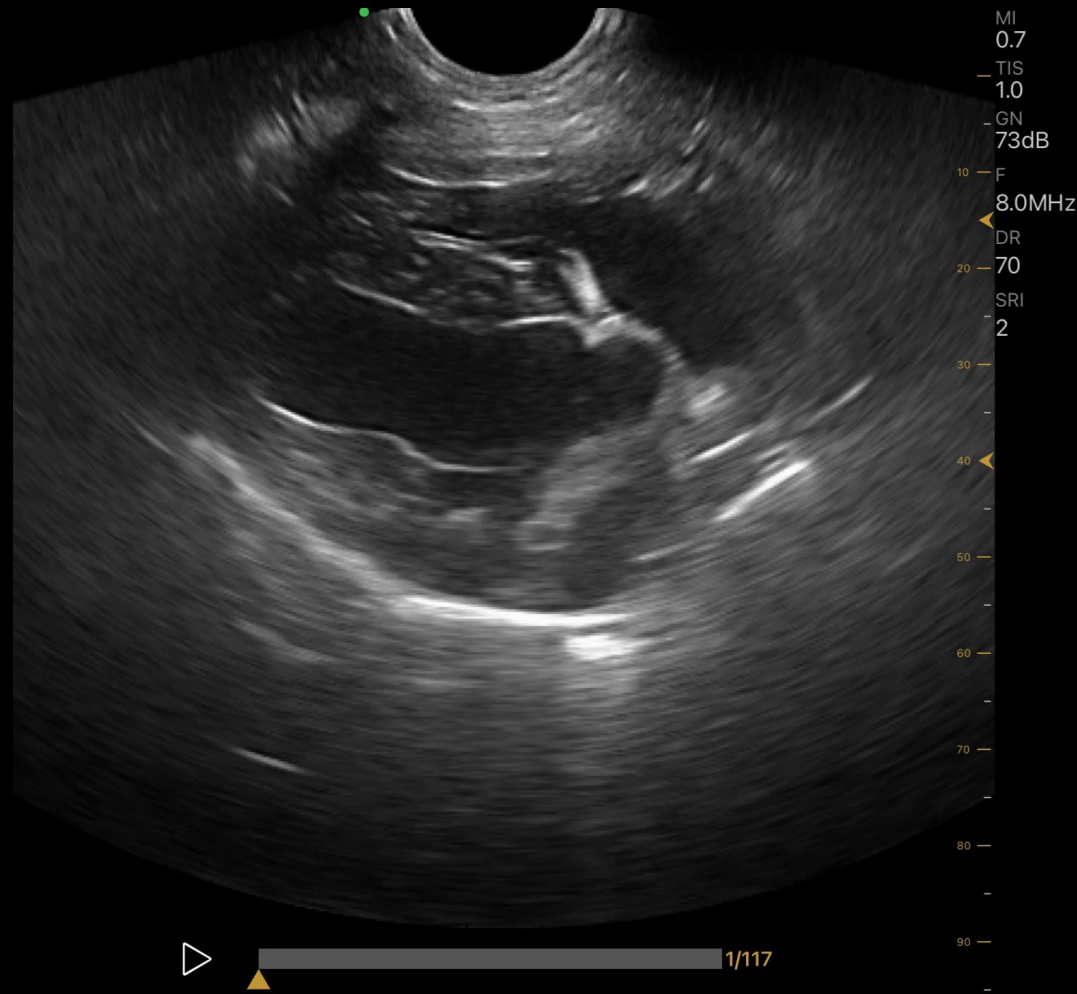
DW-P1 (Phased array probe)
array elements: 128

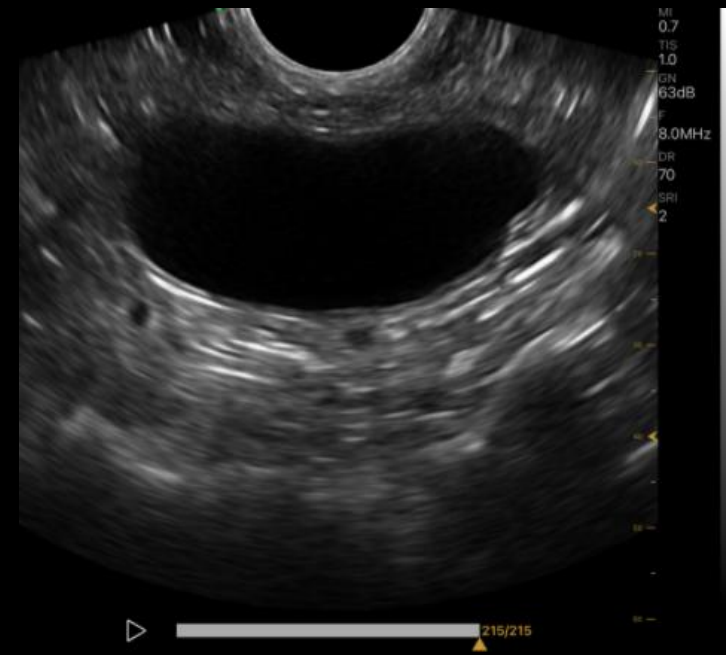
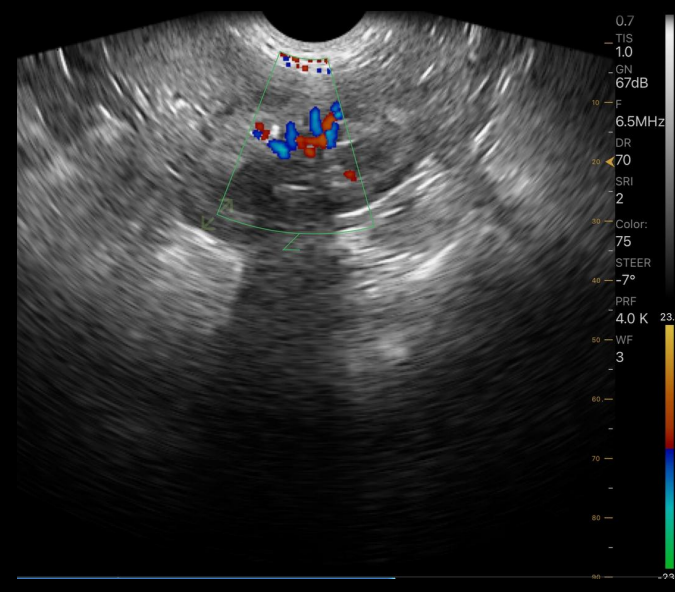
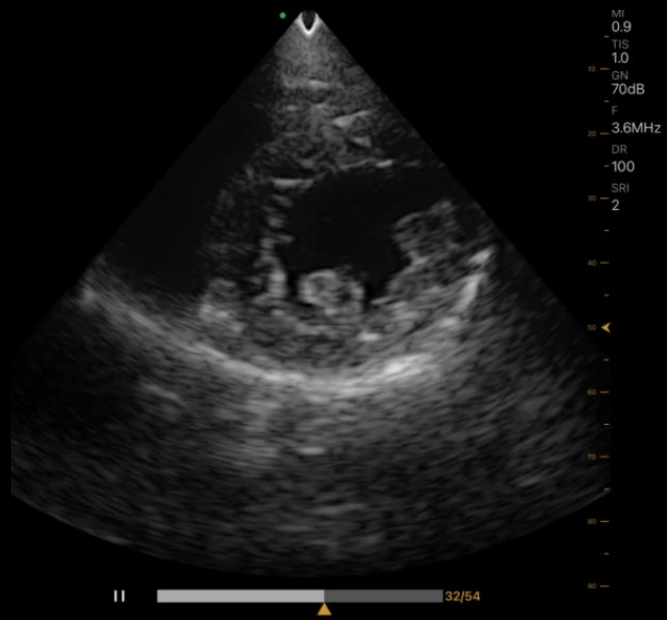
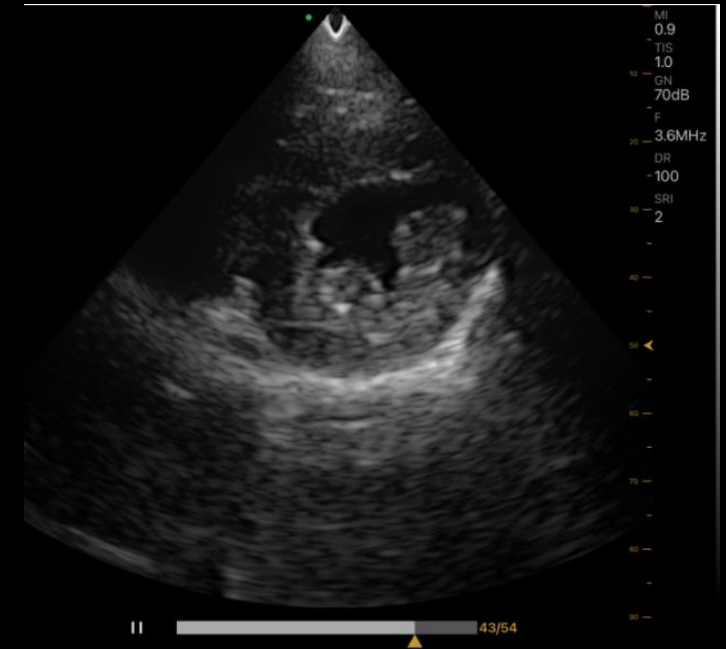
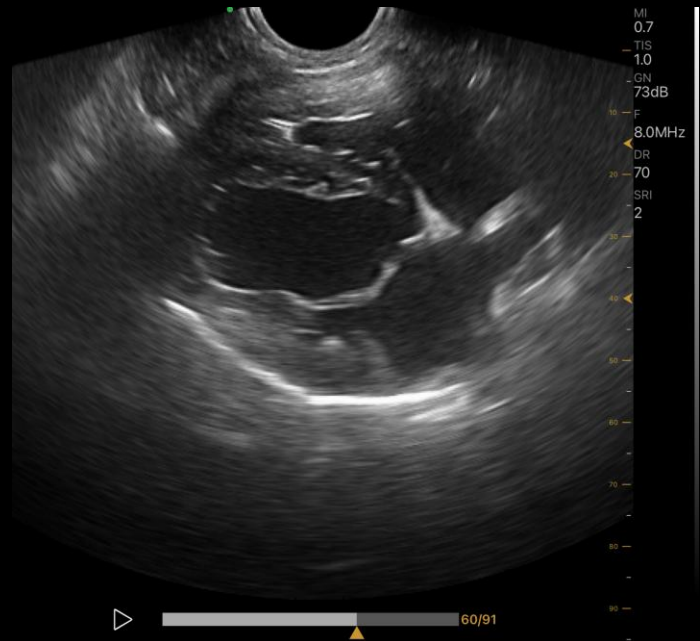
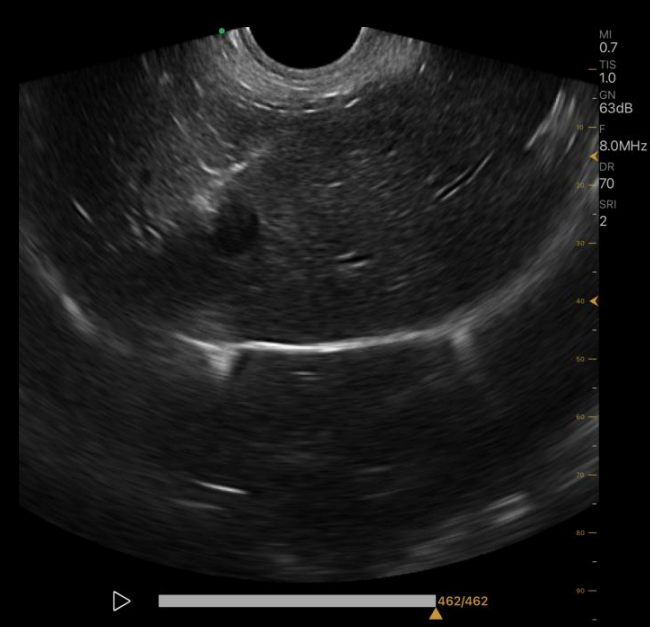
2.7MHz

Imaging showcase

DIAGNOSTIC APPARATUS

ULTRASONIC





Packing case

